

ON WASHINGTON

WASHINGTON STREET HISTORIC DISTRICT

Available for Lease

123 Washington Street, Norwalk, CT

OVERVIEW

SIZE

4,637 sf (Ground Floor)
3,000 sf (Basement)

BASE RENT

\$32/ground floor sf

TRIPLE NET

\$9.25/ground floor sf

FRONTAGE

34.2 Feet

COTENANCY

Mecha Noodle Bar, Salon Etre, Oishi, Beadworks, Saltwater, Donovan's, Il Posto, Tablao, and more!

COMMENTS

Easy access to I-95 and 7 Connector, walk to SoNo Train Station, 5 Private and Municipal Parking Garages within walking distance. Over 20 new construction apartment buildings in South Norwalk!

CENSUS

88,816 people

The Washington Street Historic District is a highly preserved landmarked community at the convergence of new construction apartment buildings, hotels, a gorgeous waterfront, and a 24/7 eat, shop, and live culture.

@onwashingtonst
www.onwashingtonst.com



For Further Information

203-984-3490

laura@simondavidrealestate.com

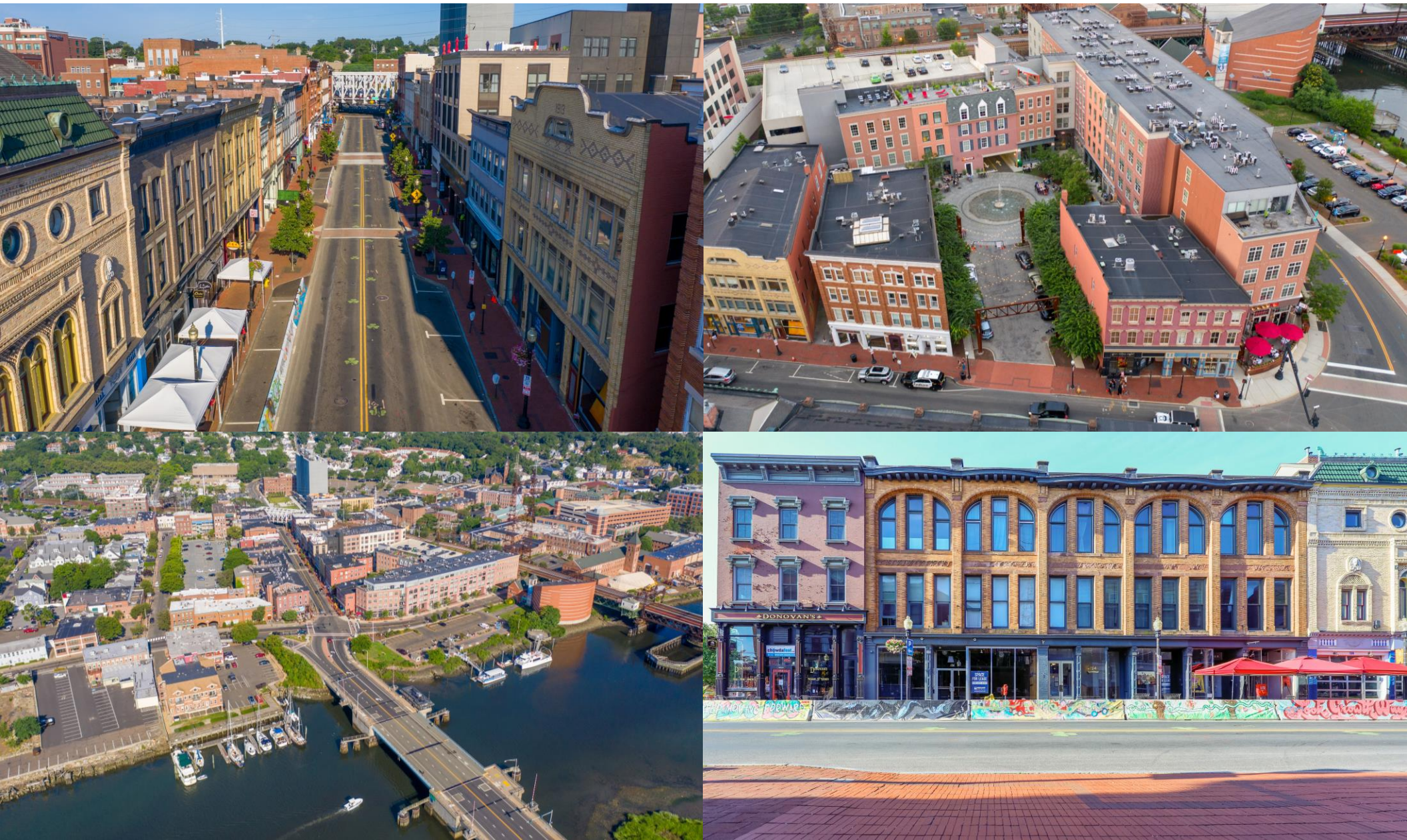
Broker Cooperation Welcomed



Welcome to the Washington Street Historic District.



Welcome to the Washington Street Historic District.



123 Washington Street | South Norwalk, CT



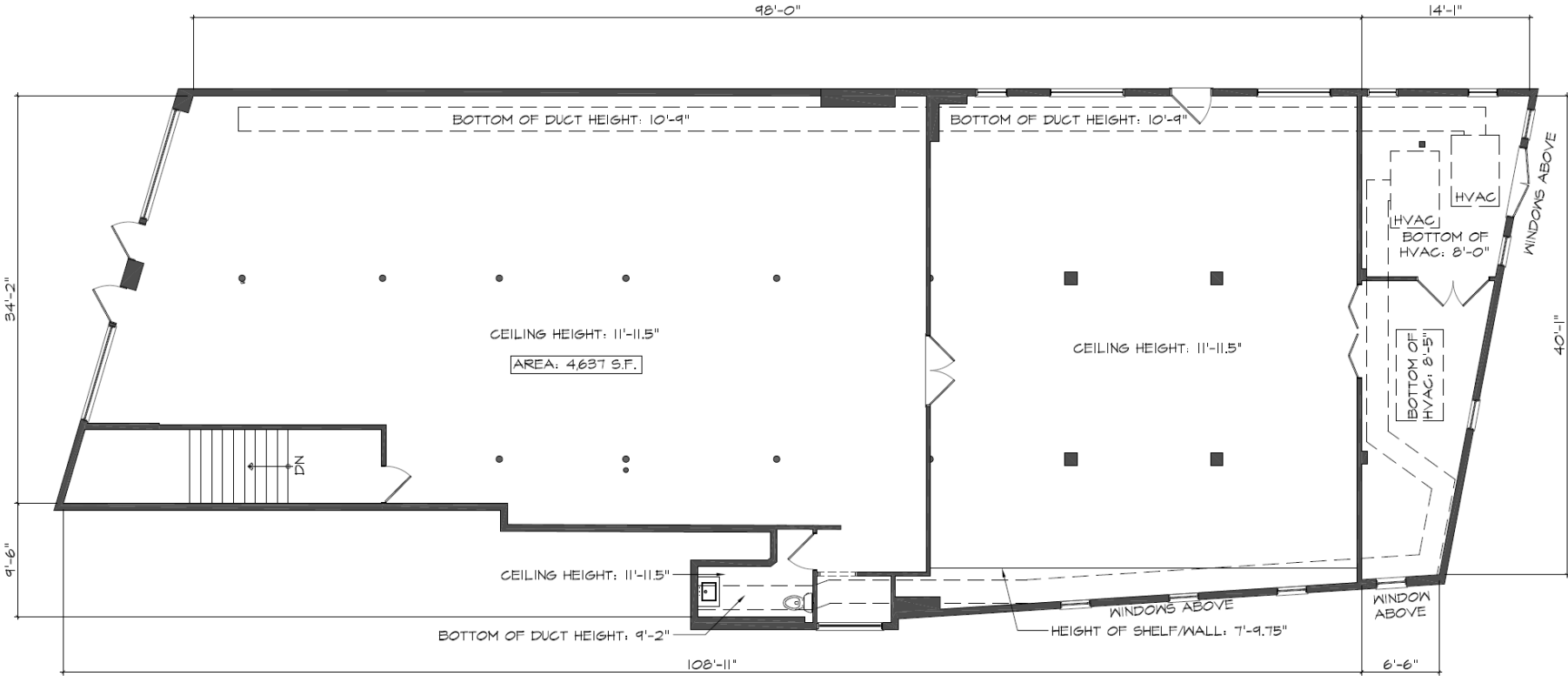
123 Washington Street | South Norwalk, CT



123 Washington Street | South Norwalk, CT



123 Washington Street | South Norwalk, CT



1

FIRST FLOOR PLAN

SCALE: 3/32"=1'-0"